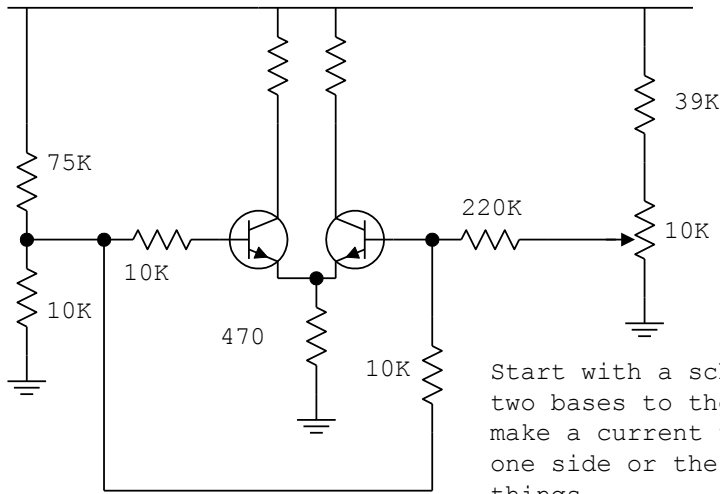


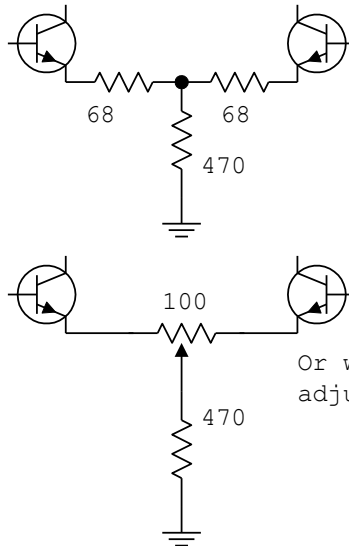
Copyright © W7ZOI 2009

Do not publish this document in print media or on the World Wide Web

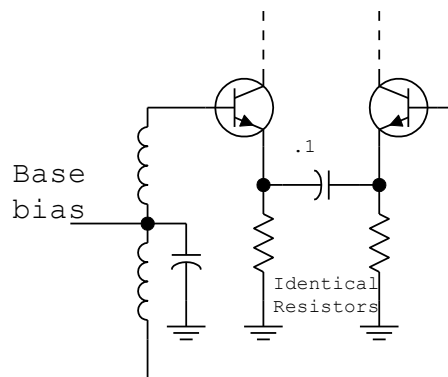


Start with a scheme that forces the two bases to the same voltage. Then make a current that you can sum into one side or the other to fine tweak things.

We can add emitter degeneration to a stage to reduce gain just as we do with single ended amplifiers. Here's a diff amp example of just that.



Or we can make it adjustable.



This is a diff amp for RF that uses a cute trick. The emitters are tied together at RF, but have separate emitter resistors for DC. So the Qs have identical currents without any tweaks. This is one I picked up from K7HFD back in an earlier lifetime.